



AskRail®

A Safety Tool for First Responders

The AskRail® app is a safety tool that provides first responders immediate access to accurate, timely data about what type of hazardous materials a rail car is carrying so they can make an informed decision about how to respond to a rail emergency.

AskRail is a backup resource if information from the train conductor or train consist is not available.

For security reasons, only qualified emergency responders can download the app.

Learn more at www.AskRail.us



Initial rollout of the app began in October 2014



All North American Class I railroads & a growing number of short lines use the app



Available in English and French in the U.S., Canada, & Mexico



AskRail is a collaborative effort between AAR, AAR Members, IAFC, & Railinc



AskRail is featured in the emergency responder standard training from Class I's

WHAT IS ASKRAIL®?

The AskRail® mobile application is a collaborative effort among the emergency response community, all Class I railroads, the Association of American Railroads, and Railinc. The app provides first responders from all 50 states, eight Canadian provinces and Mexico with immediate access to accurate, timely data about the type of hazardous materials a rail car is carrying so they can make informed decisions about how to respond to a rail emergency.

LEARN MORE: <http://askrail.us>

CONTACT: support@askrail.us

HOW WOULD A FIRST RESPONDER USE ASKRAIL®?

Upon arriving at a rail incident, an emergency responder should first attempt to locate the train's conductor to get the train consist. If the consist is not available, the emergency responder would open the AskRail® mobile application on their mobile device and query a rail car ID to find out its contents, which would allow visibility to also see the contents of the other cars on the train and to determine the next steps in their incident response. AskRail® should be used when the consist is not available or while the emergency responder is waiting to receive the proper shipping document from a railroad representative. If the railroad is already aware of the incident, it will contact the appropriate local authorities and provide the train consist.

WHICH RAILROADS PROVIDE DATA FOR ASKRAIL®?

All railroads which provide waybill data to Railinc provide access to single car lookup to AskRail®. All Class I railroads - BNSF, Union Pacific, Norfolk Southern, CSX, Kansas City Southern, Canadian National and Canadian Pacific - provide train consist data for the application as well as the Class II Wheeling and Lake Erie.



AskRail®



HOW DO I GET ACCESS?

AskRail® is available to download for free from the iOS App Store, Google Play and Amazon Appstore as well as a Windows Desktop application. Access to certain application features, including the ability to query rail car contents based on equipment number, is restricted to authorized personnel. Go to <http://askrail.us/> for more information.

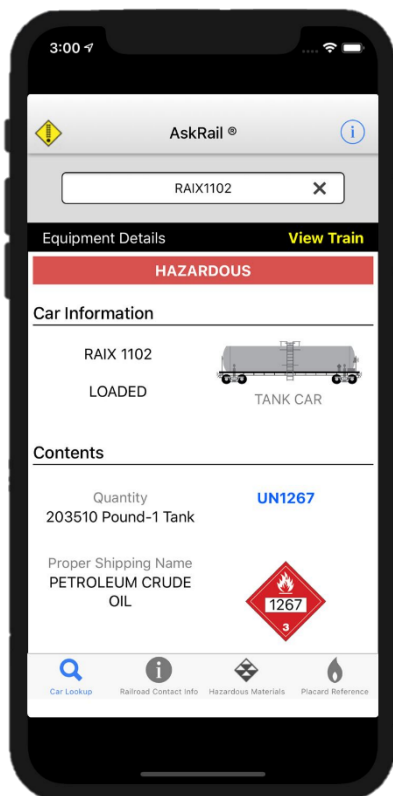
HOW DO I ACCESS THE RESTRICTED FEATURES OF ASKRAIL®?

To get authorization to use the restricted features, you must identify yourself as a first responder, provide information about your emergency response agency and identify a supervisor who can attest to your first responder duties. You must also receive sponsorship from a Class I railroad. That is easily done by picking the Class 1 railroad in your area from a dropdown menu.

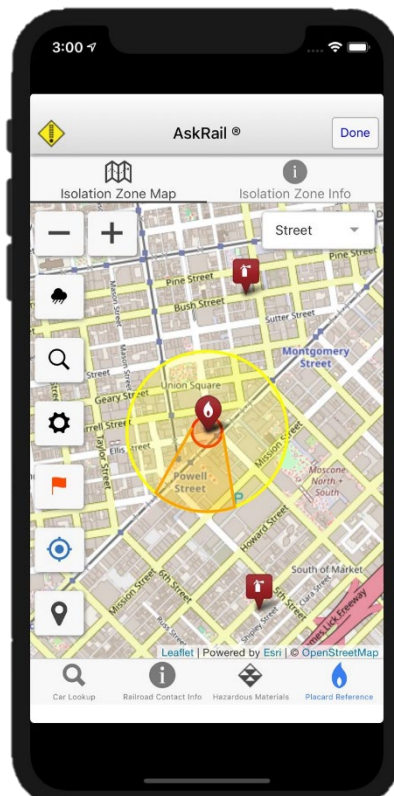
WHAT INFORMATION IS AVAILABLE VIA ASKRAIL®?

By performing an AskRail® query on a rail car, emergency responders can view data such as:

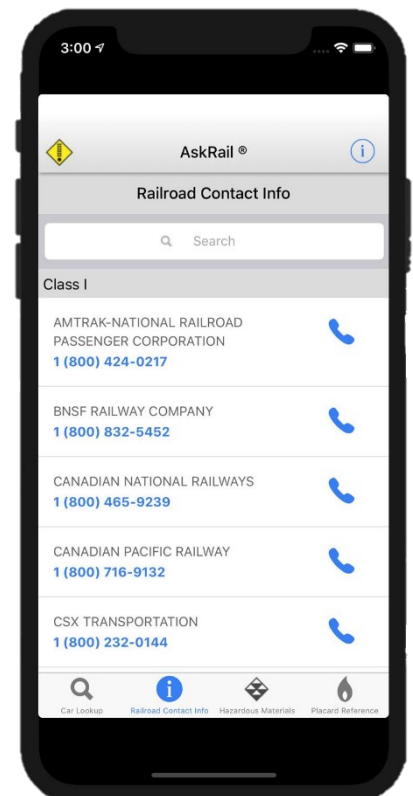
- Type of car (e.g. tank car, hopper car, etc.)
- Loaded or empty status
- The quantity in the car
- UN/NA ID for identifying hazardous materials
- Proper shipping name (PSN) for a rail car's contents
- Hazard class and packing group for the rail car's contents
- Train consist
- Handling railroad name
- Emergency contact information for all seven Class I railroads, Amtrak, and available short lines
- AAR Field Guide to Tank Cars
- A street or satellite view map representation of the isolation zone (as defined in the ERG) associated with the hazardous materials in the train showing items of interest in the area including educational institutions, hospitals and health facilities, police and fire stations
- Top 125 hazardous materials most commonly shipped by rail
- Information from the Pipeline and Hazardous Materials Safety Administration's (PHMSA) Emergency Response Guidebook (ERG)



Use the Car Lookup to search for a rail car ID and see whether a train is carrying hazardous materials



Map feature provides the isolation zone and points of interest in street or satellite view



View emergency contacts for all Class I railroads, Amtrak, and available short line railroads