

beamFirst

Broadband4Emergency
Turn Minutes into Seconds

Description: The beamFirst suite of products is design by and for first responders. It is a readily customizable, cloud-based solution that leverages the proliferation of mobile communication and the ubiquitous Internet of Things (IoT). Beam empowers first responders with heightened communication capabilities, including text, audio/video and sub-second GPS connectivity using smart and wearable devices. Users can share secured, profiled, geotagged IoT content and media, as well as real-time collaboration with citizens and dispatchers. Beam converts real-time IoT data - including audio/video and GPS – into actionable knowledge that augments human intelligence. It enhances mission-critical mobile communication for organizations that are dependent on time-centric IoT connectivity and decision-making. **The end-to-end service is designed by law enforcement experts for Emergency Response, NG911/PSAPs and First Responder safety.**



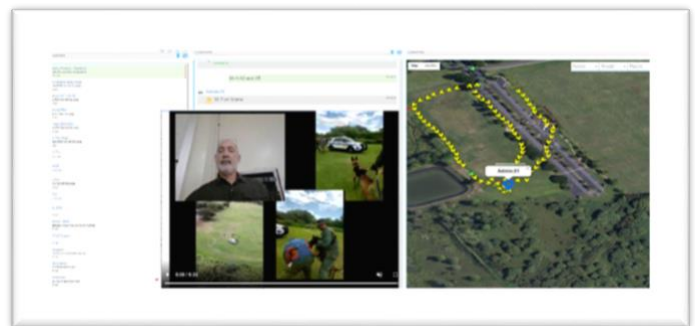
Benefits: Our objective is to offer:

- Smooth cost-effective migration from legacy, voice communication to broadband;
- Combined mobile messaging, content sharing and collaboration under one service;
- Live video overlaid with sub-second latency GPS for enhanced situational awareness;
- Cost reduction by removing multi-vendors integrating GPS, IMS and RMS services;
- New streams of revenue generation for PSAPs;
- Customize your own solutions in weeks with minimal or no development cost.

Features:

- Enable real-time Audio, Video and Text communication and GPS tracking on-the-go;
- Provide real-time mission-critical Mobile-IoT messaging and multimedia content sharing;
- Ensure instant status reporting and sub-second latency GPS via all mobile devices;
- Offers 2-way broadcasting and notification via text, location, and multimedia;
- Set-up and manage mobile workforce and assets, and integrate IoT apps;
- Target custom analytics and simplify post-event reporting.

(Right) beamFirst overlays live video with real-time GPS tracking on one screen, dramatically improving mobile communication for mission-critical operations.





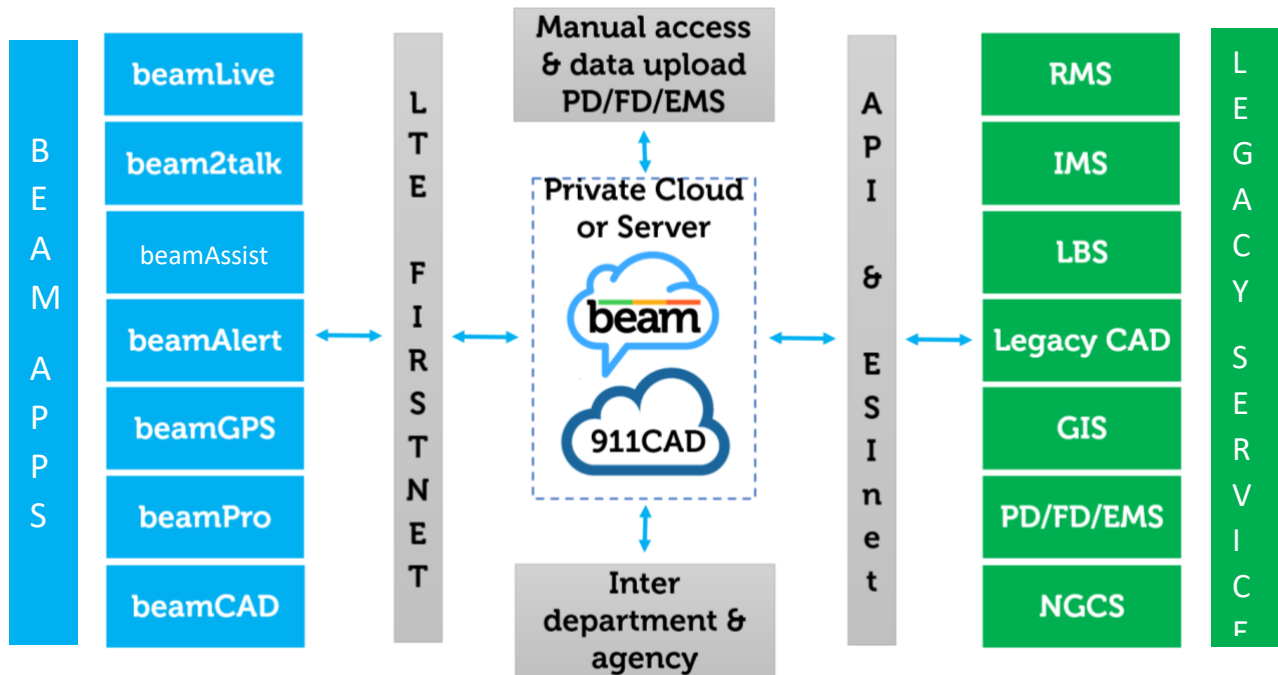
beamFirst

Broadband4Emergency
Turn Minutes into Seconds

Organizations can identify, bundle and customize their own individual or combination of services to meet specific challenges. **General services beamFirst offers include:**

- ❑ **beamAdmin** – Intuitive admin Web portal to set-up and manage mobile workforce and assets and integrate with IoT messaging apps.
- ❑ **beamAnalytics** - Provides custom analytics to enhance response time and efficiencies based on type, time and location of call/incident.
- ❑ **beam2talk** – Mimics the simplicity of Push-to-Talk over LTE and FirstNet with GPS and video augmenting audio-only, plus provides unlimited channels.
- ❑ **beamAlert** – Unique 2-way alert and notification service targeting custom groups that allows users to respond with real-time, critical information.
- ❑ **beamAssist** – One-touch, 3-button app to instantly shares personal status, real-time location, video & vital data.
- ❑ **beamGPS** – Enhanced situational awareness with sub-second latency GPS connectivity overlaying live audio and video, sharing “When” and “Where” as needed.
- ❑ **beamCAD** - Intuitive mobile dispatching service designed to connect to legacy 911 CAD systems; Supports migration path to Broadband LTE and FirstNet.

Beam’s open API and developer-ready tools and kits facilitate your own developers’ ability to customize and produce mobile Apps for your needs and requirements more easily and quickly than other platforms.



beamFirst

Broadband4Emergency
Turn Minutes into Seconds

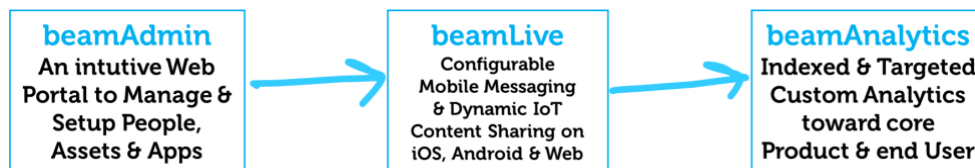
About the Company

beamLive, Inc., based in Silicon Valley and London, UK, developed and patented its **Mobile IoT Communications Platform™**, that can be customized to meet the specific needs of its clients. This system configures dynamic Internet of Things (IoT) data from various inputs (including video, GPS, home, vehicle and medical devices) into sub-second latency, mobile messages and relevant content for a target audience. Artificial intelligence and custom algorithms are applied to livestream data to enable mission-critical communication and generate time-sensitive, actionable knowledge. Our Communication-as-a-Service (“CaaS”) cloud-based platform is developer-friendly, which enables a variety of products and services to be launched quickly and inexpensively on Windows, Apple, Android and Linux operating systems.



General beamPlatform Features:

- ❑ **Manage** people, mobile workforce, assets & configure IoT Apps with admin portal.
- ❑ **Chat** with sub-second IoT connectivity using GPS location, live video & text.
- ❑ **Share** geotagged, profiled media & IoT content with secure audience.
- ❑ **Collaborate** using custom GPS/IoT Apps with Who, When & Where you want.
- ❑ **Analyze** indexed data, customized toward your core products & end users.



What makes Beam different:

Beam augments human intelligence with actionable knowledge extracted live from the Internet of Things (IoT) for mission-critical communication and time-sensitive decision-making. It is a Communication-as-a-Service “CaaS.” cloud-based platform that is easily and inexpensively configurable.

- ❑ Turns IoT Content into Instant Messages & Relevant Content with Beam’s sub-second M2M connectivity.
- ❑ Filters IoT Data into Actionable Knowledge using Beam’s advanced Artificial Intelligence (AI) protocols & algorithms.
- ❑ Configures IoT Data into Mobile Apps utilizing our semi-customizable cloud platform.

For more information or to schedule a demonstration, contact us at first@beam.live.