

# Upgrade to a New Level of Visibility

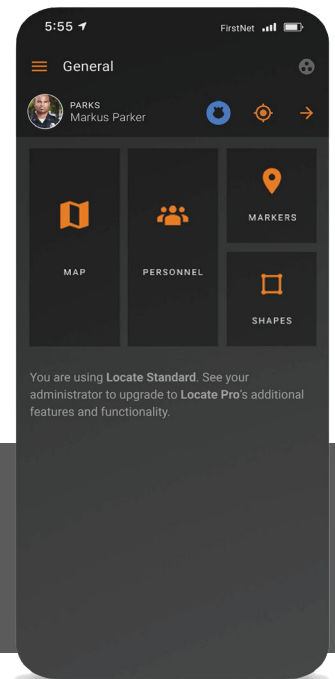
## Get Locate Standard for FirstNet® Free for 12 Months

In today's public safety environment, coordinating groups in the field during emergency situations can be challenging. First responders have limited situational awareness and have to use radios to communicate their positions – especially within multi-story structures.

**Lack of visibility can lead to delayed response times and operational decisions based on limited information, potentially putting lives at risk.**

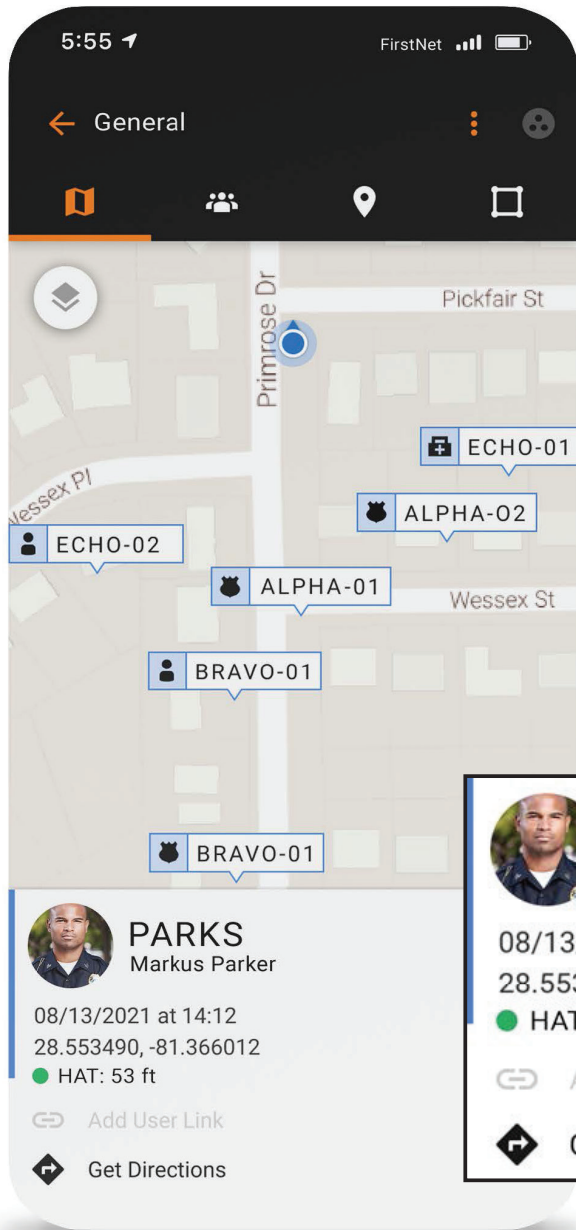
Locate Standard for FirstNet® is a dynamic mapping solution that empowers public safety by providing near real-time responder locations on a detail-rich map, including Z-Axis (or vertical position) to identify a team member's location in multi-story structures.

## Z-Axis Location in 90% of buildings 3 stories or taller in the USA



**Free 12 Months Intrepid Response Locate Standard: Limited time offer.** Select locations only. **Eligibility:** Avail. to public safety entities with a FirstNet serv. agmt (Business Agmt) and only for Agency Paid Primary user lines of serv. Subject to availability. New or existing subscribers must qualify for FirstNet service and complete verification process w/in 30 days. **Check elig. at [firstnet.com/eligibility](https://firstnet.com/eligibility).** **Eligible Devices/requirements:** Must be a new or existing (BYOD) FirstNet Capable smartphone device with a FirstNet SIM card. See [firstnet.com/devices](https://firstnet.com/devices) for a current list of FirstNet Capable devices. App requires Android v. 8.0 or higher and iOS v13 or higher. **Response Locate Standard app service:** After 12 mos. Standard service will discontinue. To sign up for service after 12 months, customer must call 855-583-4288 between 8:30 AM – 5:30 PM EST. **Pricing:** Locate Standard; \$3 per user per mo. **Response Locate Pro and Activate Free 2 mos.:** After first 2 months, Locate Pro and Activate will automatically cancel. Subscribers must call **FirstNet Care at 1.800.574.7000** to opt-in and continue service. **Pricing:** Locate Pro \$6 per user per mo. & Activate; \$3 per user per mo. **Limits:** Limit one license per account. May not be combinable w/other offers, discounts, or credits.

**GEN. WIRELESS SVC:** Subj. to applicable Business Agmt (see your AT&T representative for terms.) Credit approval req'd. **Deposit:** may apply. Limits: Purch. & line limits apply. **Additional monthly fees & taxes:** Apply per line & include Regulatory Cost Recovery Fee (Up to \$1.50), Administrative Fee (\$1.99), Property Tax Allotment surcharge (\$0.20-\$0.45) & other fees which are not government-required surcharges as well as taxes. Additional one-time Fees may apply. See [www.att.com/mobilityfees](https://www.att.com/mobilityfees) for more details. Usage, speed, coverage & other restr's apply. International and domestic off-net data may be at 2G speeds. AT&T & FirstNet services subject to AT&T network management policies. See [att.com/broadbandinfo](https://att.com/broadbandinfo) for details.



# Make More Informed Decisions

## Improve situational awareness

Enhance on-scene situational awareness and coordination by visualizing the location of all personnel in multi-story buildings or dense urban areas.

## Reduce response times

Reduce response times with near real-time location of all personnel, enabling better, more efficient coordination.

## Reduce radio traffic

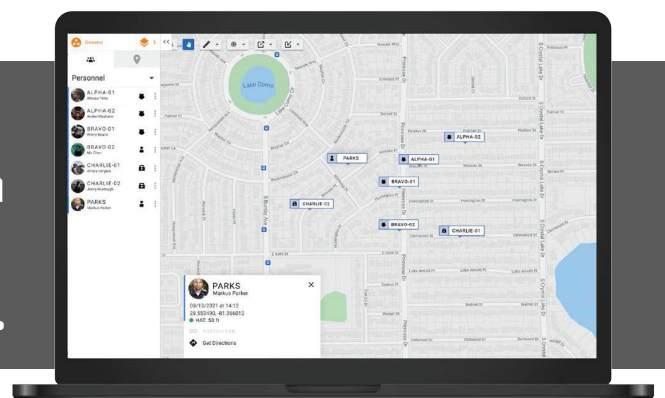
Eliminate unnecessary radio traffic, leaving the radio free for the must get communications.

## HAT (Height Above Terrain)

Vertical locations of responders are displayed in HAT format.

**Locate Standard for FirstNet® gives commanders the timely information they need to make critical operational decisions – especially when seconds count.**

**Commanders can monitor all personnel from any location with an Internet connection using the Locate Standard web application.**



## Want more features?

Get Locate Pro for FirstNet® – our premium mapping solution, and Activate – an emergency callout and team mobilization tool, **FREE for 2 Months**.

**Free 12 Months Intrepid Response Locate Standard: Limited time offer.** Select locations only. **Eligibility:** Avail. to public safety entities with a FirstNet serv. agmt (Business Agmt) and only for Agency Paid Primary user lines of serv. Subject to availability. New or existing subscribers must qualify for FirstNet service and complete verification process w/in 30 days. **Check elig. at [firstnet.com/eligibility](https://firstnet.com/eligibility).** **Eligible Devices/requirements:** Must be a new or existing (BYOD) FirstNet Capable smartphone device with a FirstNet SIM card. See [firstnet.com/devices](https://firstnet.com/devices) for a current list of FirstNet Capable devices. App requires Android v. 8.0 or higher and iOS v.13 or higher. **Response Locate Standard app service:** After 12 mos. Standard service will discontinue. To sign up for service after 12 months, customer must call 855-583-4288 between 8:30 AM – 5:30 PM EST. **Pricing:** Locate Standard; \$3 per user per mo. **Response Locate Pro and Activate Free 2 mos.:** After first 2 months, Locate Pro and Activate will automatically cancel. Subscribers must call **FirstNet Care at 1.800.574.7000** to opt-in and continue service. **Pricing:** Locate Pro \$6 per user per mo. & Activate; \$3 per user per mo. **Limits:** Limit one license per account. May not be combinable w/other offers, discounts, or credits.

**GEN. WIRELESS SVC:** Subj. to applicable Business Agmt (see your AT&T representative for terms.) Credit approval req'd. **Deposit:** may apply. Limits: Purch. & line limits apply. **Additional monthly fees & taxes:** Apply per line & include Regulatory Cost Recovery Fee (Up to \$1.50), Administrative Fee (\$1.99), Property Tax Allotment surcharge (\$0.20-\$0.45) & other fees which are not government-required surcharges as well as taxes. Additional one-time Fees may apply. See [www.att.com/mobilityfees](https://www.att.com/mobilityfees) for more details. Usage, speed, coverage & other restr's apply. International and domestic off-net data may be at 2G speeds. AT&T & FirstNet services subject to AT&T network management policies. See [att.com/broadbandinfo](https://att.com/broadbandinfo) for details.

Feature	Locate Standard	Locate Pro
Z-Axis	Yes	Yes
Channels	1 Channel (General)	Unlimited
Location Reporting	7-10 sec	3-5 sec
User Icons	5	60+
Team Colors	1 color - blue	6 colors - red, green, blue, yellow, purple, gray
URLs for Personnel Markers	No	Yes
Stale Users Display	No	Yes
Markers	No (Q1 2022 Feature)	Unlimited
Turn-by-Turn Directions to Markers	No (Q1 2022 Feature)	Yes
Google Traffic Layers	No	Yes
Google Night Maps	No	Yes
Google Street View	No	Yes
Map Shapes	No	Unlimited
Breadcrumbs	No	Yes
KML Export	No	Yes
KML Import	No	Yes
Cluster Markers	No	Yes
Cluster Personnel Marker	No	Yes

The application is designed to provide an accurate depiction of altitude or “Z-Axis” of the devices in relation to the local terrain, expected to be within 3 meters under normal conditions. In some cases, the accuracy of relative altitude may be impacted by local conditions, including inaccurate horizontal location coordinates, mis-calibration of the sensors on the device, damage to the device, extreme environmental conditions, highly pressurized rooms or buildings, or other conditions.

For more information on Locate Standard or to connect with FirstNet, please visit us online at: <https://digital.firstnet.com/locatecontactus> or call FirstNet Support at 855-583-4288 (8:30-5:30 EST)