

INTREPID NETWORKS
PRODUCT INFORMATION SERIES

Mutual Aid Channels

NUMBER 03 - 2023

Share one common operating
channel when responding to
mutual aid incidents with
Response for FirstNet.

Mutual Aid Channels

Communication, Collaboration, and Coordination are Critical When Mounting a Coordinated Multi-Agency Incident Response.

The need is growing for effective mutual aid across public safety agencies. Whether it be a hostage situation, a high-speed pursuit across jurisdictional boundaries, or a large-scale natural disaster, agencies routinely call upon each other for assistance.

Responders across multiple jurisdictions must collaborate quickly and securely, across agencies.

Successful mutual aid requires a common operating channel that enables critical mission information sharing for rapid, effective, and safe incident response.



Mutual Aid Channels

Coordinating across Disparate Agencies Can Be Challenging.

One of the biggest challenges agencies face during mutual aid events is effectively sharing critical information with all responders on the scene. Sharing that critical information can be surprisingly complicated, with many organizations using different systems and equipment that don't interoperate. Agencies are often left to use unsecured chat rooms and public apps to fill those operational gaps.

These situations lead to poor information distribution, confusion, and degraded information accuracy.

Agencies currently work in silos that don't allow teams to share critical information. These silos have multiple steps to get the information out causing delays in action.

Operating with multiple organizations during a mutual aid event

**Law
Enforcement**



DATA

Fire/EMS



DATA

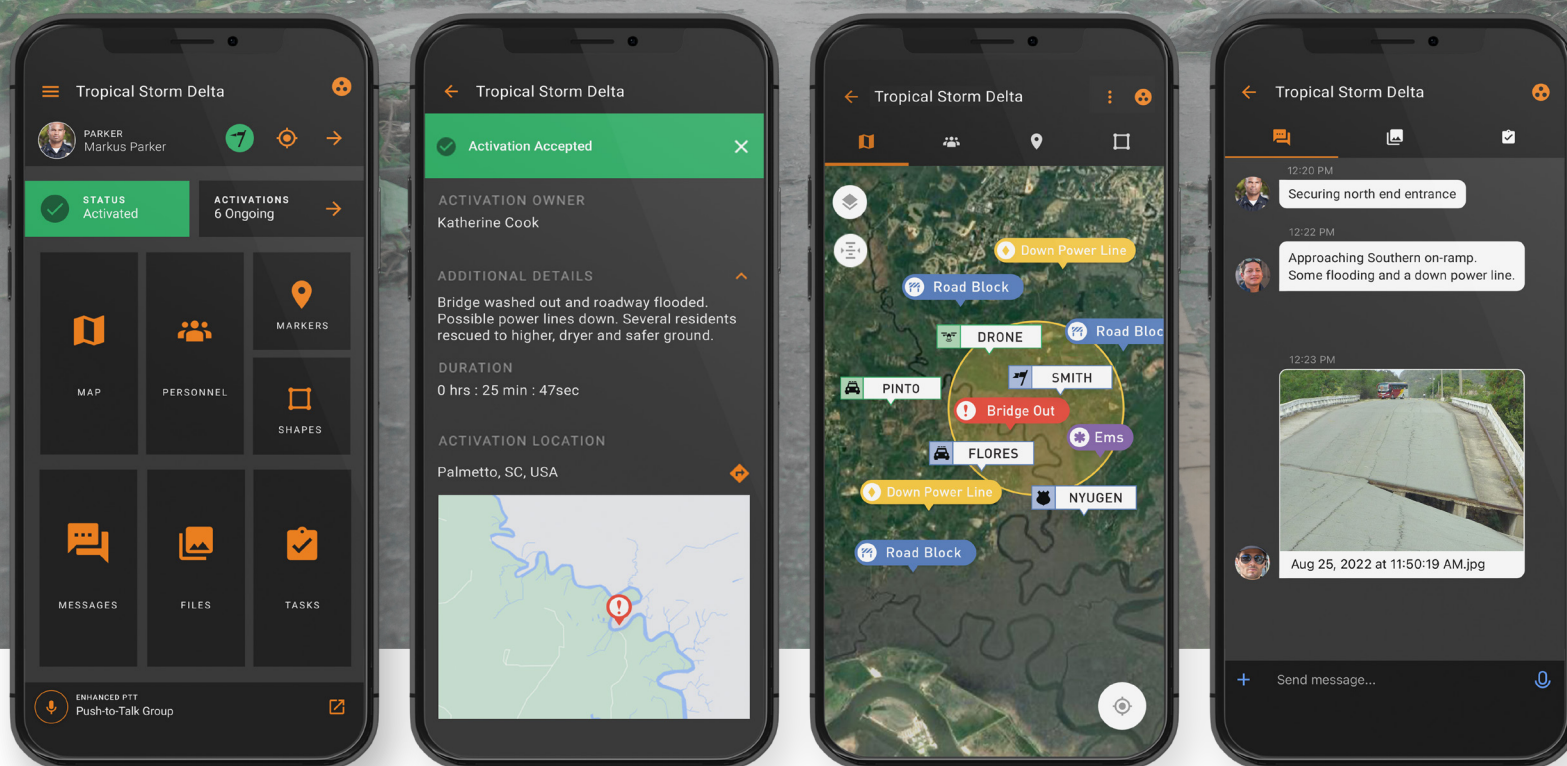
**Federal
Agency**



DATA

Siloed systems result in poor information sharing and delayed response times.

Intrepid Response for FirstNet Situational Awareness Platform



RESPONSE
DASHBOARD

EMERGENCY
MOBILIZATION

LIVE
MAPPING

INFORMATION
SHARING*

Mutual Aid Channels

Added to Mutual Aid Channel

You have joined **Mutual Aid Example**. This channel contains members from other Agencies. All other Visible Channels will be turned off on the map when viewing the shared channel for the first time.

DISMISS [VIEW CHANNEL](#)

Users receive invitation to join the mutual aid channel for fast and effective coordination.

We have a better way.

Agencies across police, fire, and medical services at all levels of federal, state, and local jurisdictions can now securely communicate, collaborate, and coordinate in the field over a common operating picture with Intrepid Response for FirstNet mutual aid channels.

With just a few clicks, your agency can create mutual aid shared channels and invite an unlimited number of agencies to join. All participating agencies can now work from the same real-time information from a shared map and shared channel for communication exchange and complete interoperability.

* Coming in 2023

Mutual Aid Channels

How does the channel feature work in the Intrepid Response for FirstNet Platform?

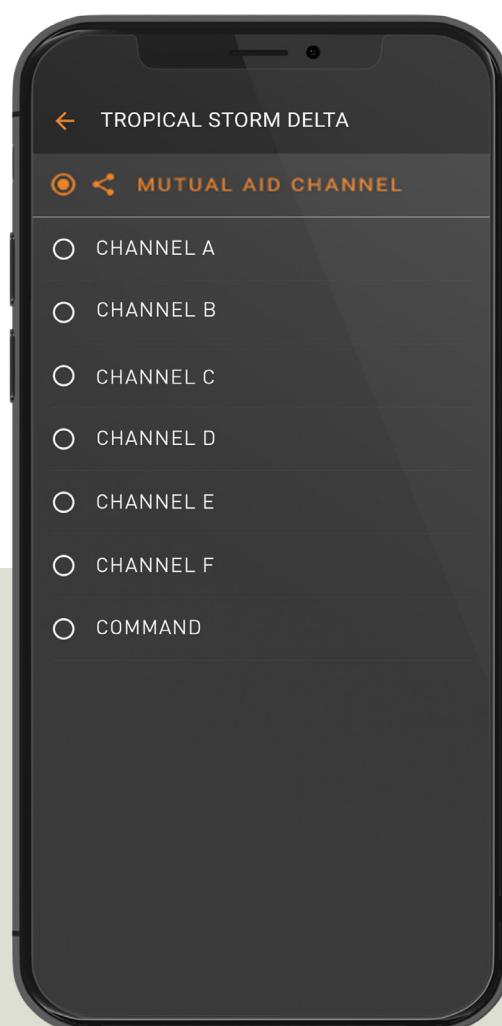
Channels allow agencies to manage multiple operations simultaneously. Only invited users can share and view operational data - similar to radio channels.

Teams can work in private channels for individual team coordination and then move to the mutual aid channel for larger event interoperability and coordination.

Commanders can toggle channels on/off to manage the visibility of one, more, or all teams.

Mutual Aid Channels

All responding agencies must be using the Intrepid Response for FirstNet Platform to use mutual aid channels.



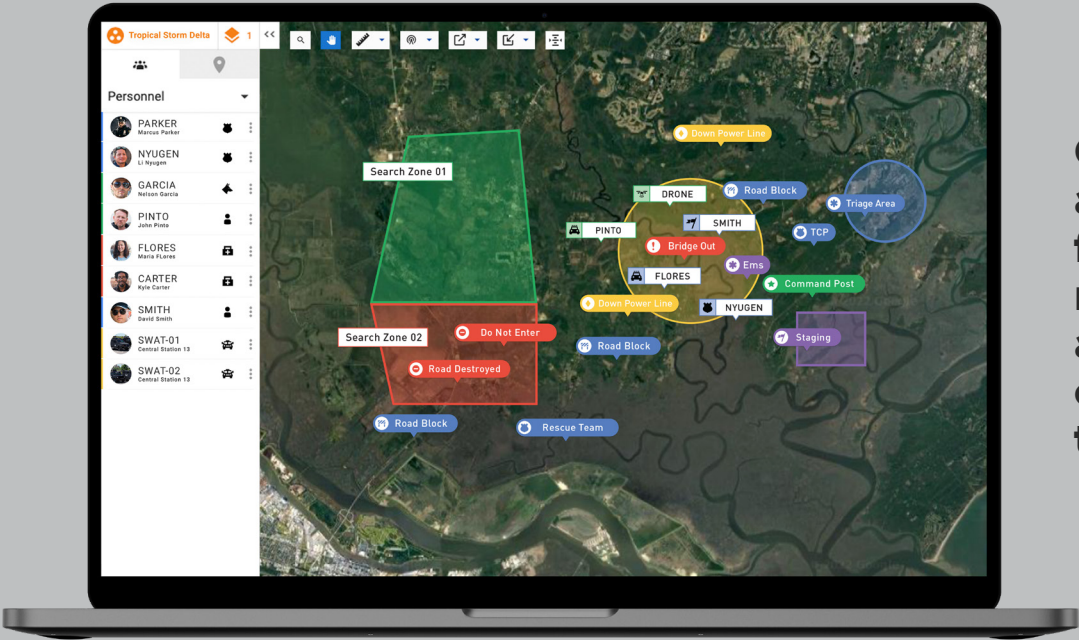
Mutual Aid Channels

Advantages

- Secure communication over one common operating picture across police, fire, and medical services at all levels of federal, state, and local jurisdictions.
- Persistent information-sharing for intelligence gathering purposes to support crime control missions such as gang violence, drug crimes, trafficking, prisoner escapes, and search and rescue operations.
- Near live location updates for all responders in the field.
- Rapid creation and sharing of map markers and shapes.
- Sharing of digital media, videos, photos, whiteboarding, action plans, task lists, Incident Action Plans, and documents.
- Excessive, confusing radio traffic is eliminated.
- Response times are significantly shorter, while response accuracy is significantly improved.



Intrepid Response for FirstNet Web Console



Offsite supervisors and commanders from any location can manage and monitor all activities and communications via the web console.

Mutual Aid Channels Significantly Reduce Radio Traffic and Decrease Response Times

The Intrepid Response for FirstNet platform, can create multiple separate operating channels to ensure that the right people get the right information without overload, regardless of agency.

Mutual Aid Channels

How do Intrepid Response for FirstNet mutual aid channels work?

Add outside agencies to an Intrepid Response for FirstNet mutual aid channel for interoperability.

Follow These Four Easy Steps.

1.

Agency A creates mutual aid channel.



2.

Agency A adds its members, shapes, and markers to that channel.



3.

Agency A invites Agency B to mutual aid channel.



4.

Agency B gets and accepts invite and adds its members, shapes, and markers to the mutual aid channel.



Try it for FREE.

Sign up for a free month of Intrepid Response for FirstNet and see how mutual aid channels can help your organization.

Note:

Involved agencies need to be Intrepid Response for FirstNet subscribers, and/or an agency needs to have additional licenses to assign to another agency.

Intrepid Response for FirstNet

Communicate, Collaborate, Coordinate.

Intrepid Response for FirstNet is a low-cost, simple-to-use web and mobile situational awareness platform for day-to-day and emergency operations. Mapping, information-sharing, team mobilization, emergency notification and integrated Push-to-Talk voice communications all in one deployable solution.

Intrepid Response for FirstNet is the first situational awareness application to use NextNav Z-Axis location. Know vertical locations of all personnel in dense urban areas and multi-story structures.

ADVANTAGES :

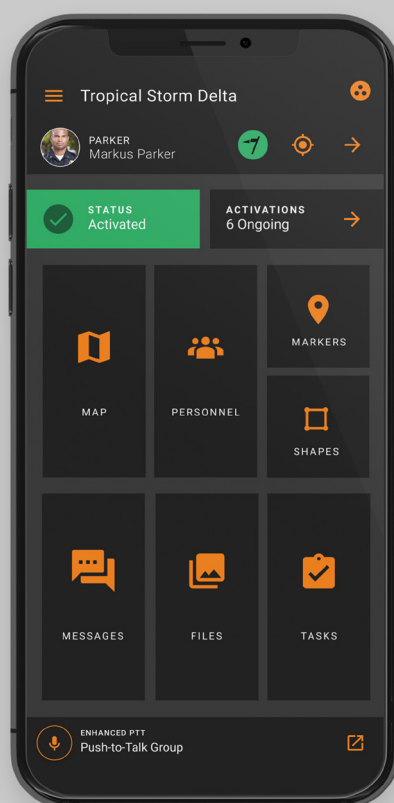
**Reduce
Radio Traffic**

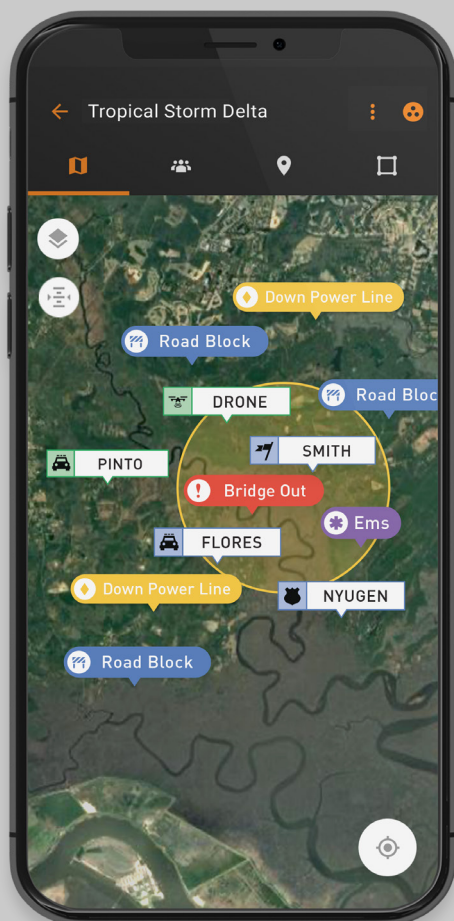
**Decrease
Response Times**

**Securely Share
Information**

**Increase
Responder Safety**

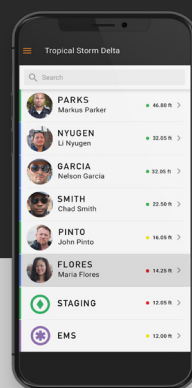
**Enhance
Situational
Awareness**





Z-Axis Vertical Location

Improve on-scene situational awareness and coordination by visualizing the vertical location of all personnel in dense urban areas with multi-story buildings. Click directly on a user icon to see that individual's HAT (height above terrain) value, or view the entire team's HAT in the altimeter view.



The coverage area extends to 90% of all buildings over three stories in the US.*

*Inside the NextNav network coverage area

Locate

Geo-spatial solution with feature rich mapping, monitor location of all personnel, tagged assets, and markers in near real-time.

Features and Benefits – Near real-time GPS location of all team members. – Dramatically reduce location radio traffic. – Improved coordination with teams outside of the vehicles. – Manage multiple simultaneous operations. – Auto-navigate to personnel and markers – UAV Drone, GPS trackers, WIFI beacons and sensor integrations.

NEW: Landscape Mode – landscape map mode for chest-mounting applications. Altimeter – view HAT of entire team or individual members.

AT&T Enhanced Push-to-Talk

EPTT is integrated directly into the Intrepid Response for FirstNet dashboard via a customizable button location.

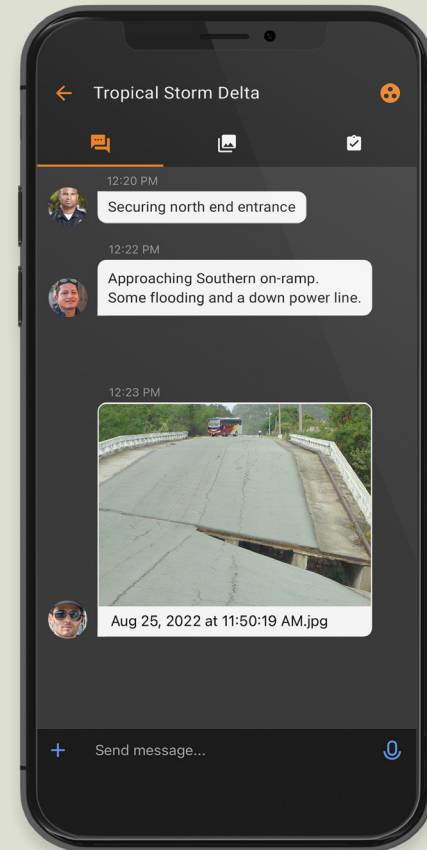
“We use Intrepid Response for FirstNet as our operating platform for all team activations.”

Commander of the Suburban Critical Incident Team,
Brookfield, WI

Connect

A multi-layered collaborative workspace that provides highly secure team communications and sharing of digital content on demand.

Features and Benefits – Sharing of text, videos, photos, documents, and digital media with the entire team. – Collaborative documents and whiteboards. – Automated task management.



AVAILABLE IN:





See how Intrepid Response for FirstNet can help
your organization.

Intrepid-Networks.com