

JPS VIA, powered by the ESChat platform, provides secure voice and data links between mobile devices and JPS gateways. This brings many new features to gateway operators, interoperability system members, and Smart Device users.



Benefits

- Connection to JPS equipment with RoIP
- Wireless Carrier Independent and Cross Carrier Capable
- Fast Call Setup, Excellent Voice Quality
- Instant Secure PTT Voice and Group Text Communications
- Text and Photo Messaging Capability
- Live and Historical (Bread Crumb) Location Tracking
- ISSI Integration for P25 Networks
- AIS Integration for DMR Networks
- In-Call Preemption and Priority-Based Call Override
- Late Join and Re-Join on Group Calls
- Presence for Groups and Individual Contacts
- Complete User Account Management by Administrators using a Web-based GUI
- SIPREC Interface provides 24 hour Playback of Audio Calls
- Path to Mission Critical PTT (MCPTT)

Overview

The JPS VIA Push-to-Talk over cellular application, integrated with JPS radio interoperability gateways, provides our customers a major expansion in communications capabilities. Hardware costs drop when access to radio channels can be provided by cellular devices to personnel who need access, but don't require all features available to handheld radios.

Additional benefits include the ability to set up ancillary Smartphone talk groups to reduce traffic on vital radio channels during a major incident, plus the extension of communications into areas with poor radio coverage, such as in a parking garage, or to supervisors traveling outside the coverage area.

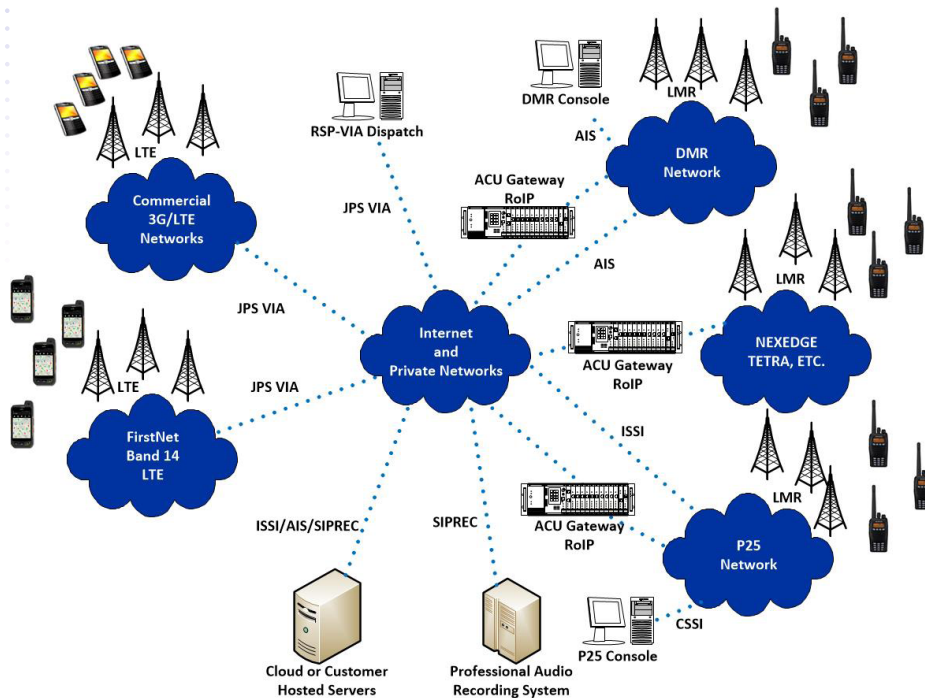
JPS VIA is offered as a hosted service running on commercial 3G/4G/LTE/WiFi networks. Customers simply purchase the service through JPS and download the application to their Smartphones from the [FirstNet](#), [Google Play](#), or [Apple App Store](#). A low monthly service fee is charged per mobile device used.

JPS VIA offers ESChat's full and very extensive feature set, and JPS will be also be rolling out new features that more tightly integrate the JPS VIA application with ACU gateways, bringing increased awareness and control to all users of the combined system.



JPS VIA PTT over Cellular™

Phone and Radio Interoperability



Note: Some capabilities in diagram are options to the standard PTTtoC capability.

Public Safety

- FirstNet
- Military
- Federal Government
- State & Local
- Private Security

Education

- School Districts
- Universities
- Campus Police & Fire

Transportation

- Medical
- Construction
- Taxi & Limo
- Charter Coach
- Towing

Utilities

- Generation
- Distribution
- Customer Service
- Emergency Service
- Engineering

Hospitality

- Guest Services
- Housekeeping
- Food & Beverage
- Limousine

Logistics

- Warehousing
- Retail
- Distribution
- Dispatching

JPS Interoperability Solutions
 5800 Departure Drive
 Raleigh, NC 27616
 919.790.1011
 24/7 Support Provided
www.jpsinterop.com

Sales Inquiries:
sales@jpsinterop.com

Support Inquiries:
support@jpsinterop.com

Facebook:
facebook.com/jpsinterop

LinkedIn:
linkedin.com/company/jps-interoperability-solutions-inc/

Twitter:
twitter.com/jpsinterop

YouTube:
youtube.com/c/JPSInteropChannel